



Plastic Paints Plant

SEMI-AUTOMATIC OPERATION

- § Silos
 - 1. Calcium Carbonate
 - 2. Titanium Dioxide
 - 3. Talc

- § Hopper for powder dosage

- § Transportation by worm drive

- § Tanks with load cells

- § Solids and liquids dosing based on weight

- § Six additives plus water dosing based on weight



Plant general view

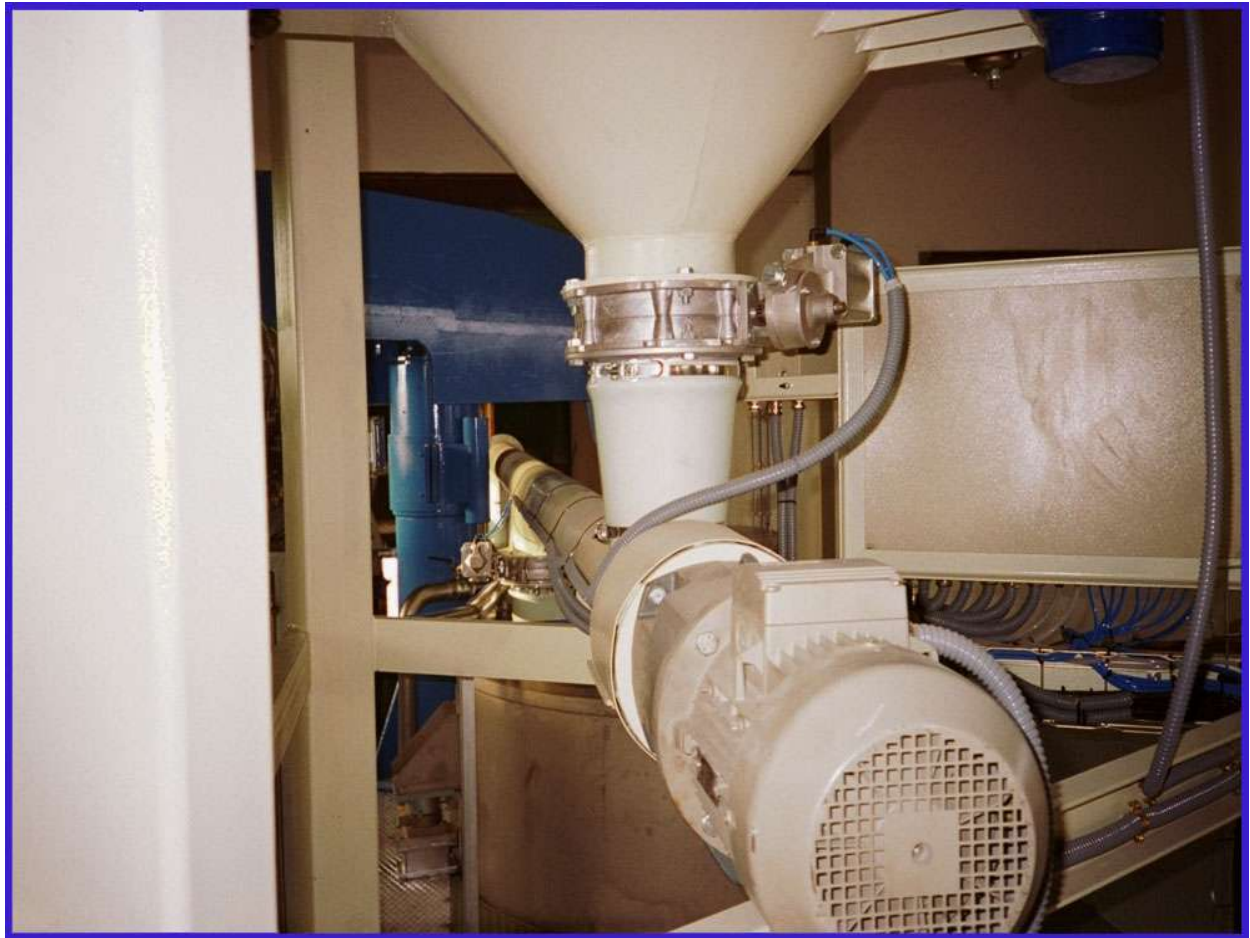


Plant General View



Detail of liquids and powders dosage





Detail of liquids and powders dosage





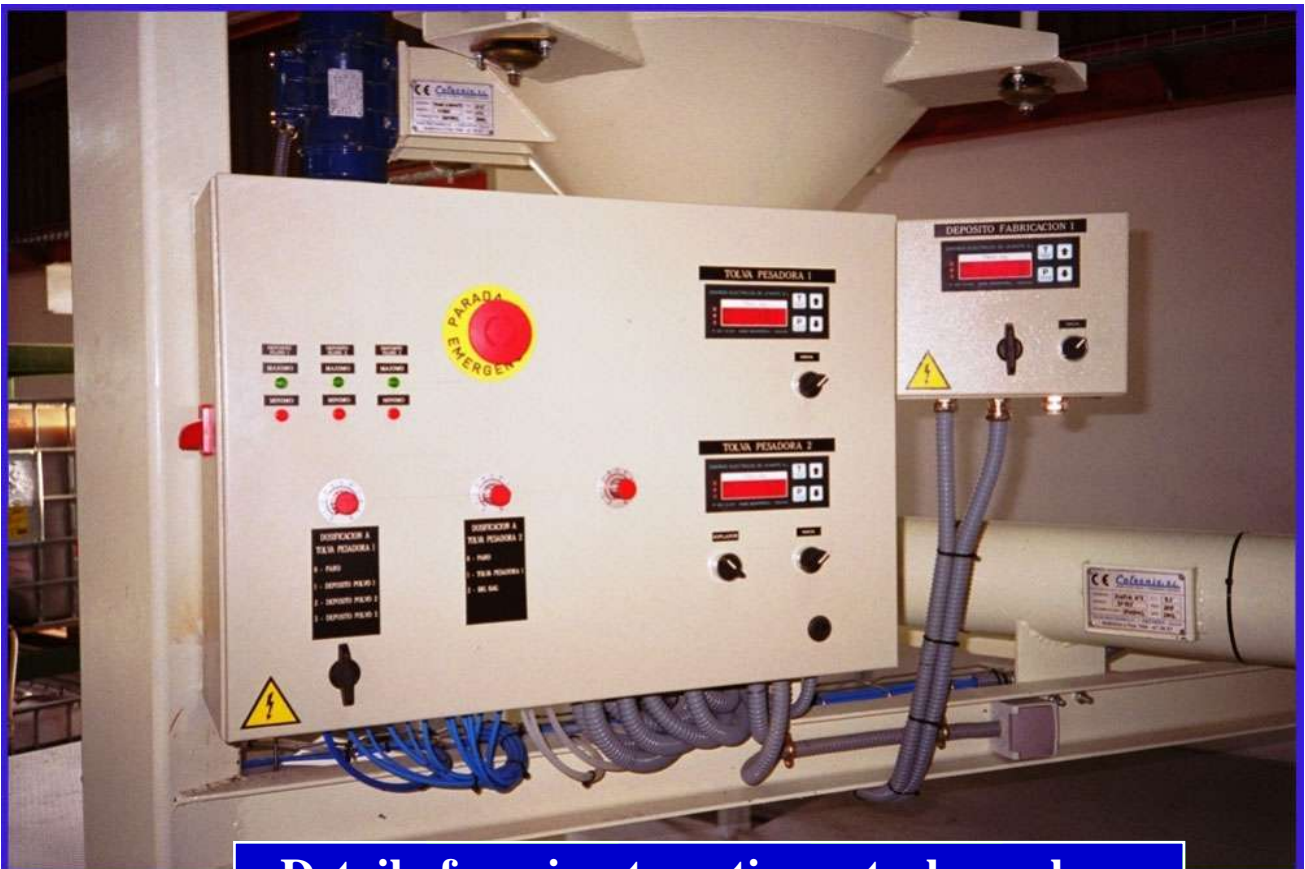
Detail of additives dosage



Detail of additives dosage



Detail of semi-automatic control panel





Detail of Resins Tanks and Dissolver



Silos detail

